

Supplementary Material for
“Analysis of High-Dimensional Data
Using Local Input Space Histograms”

Jochen Kerdels and Gabriele Peters

*University of Hagen - Faculty of Mathematics and Computer Science
Human-Computer Interaction
Universitätsstrasse 1, D-58084 Hagen, Germany*

November 14, 2014

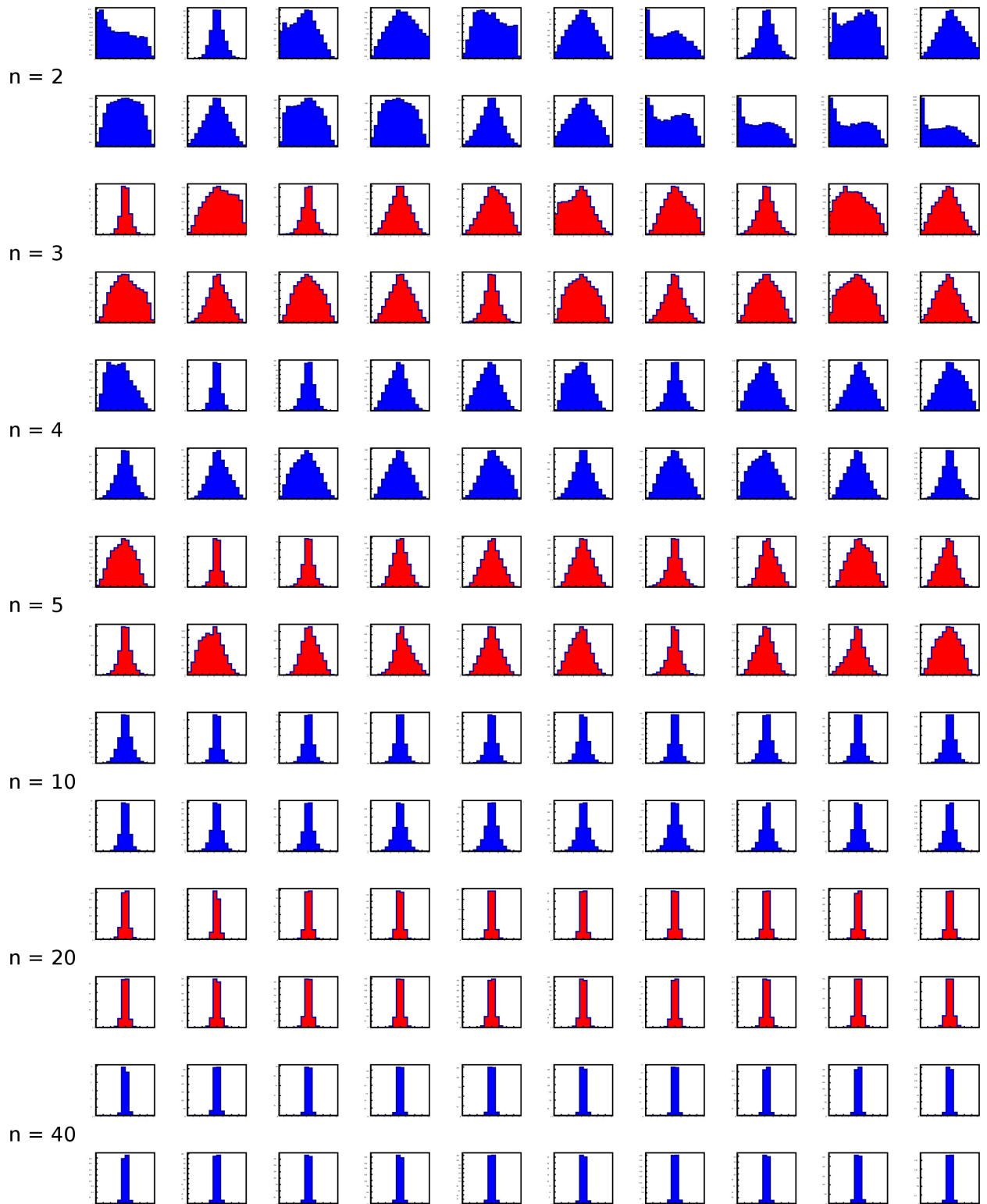


Figure S1: Comparison of local input space histograms of GNGs with 50 units, fixed Minkowski parameter $p = 2$, and increasing dimensions n of input space.

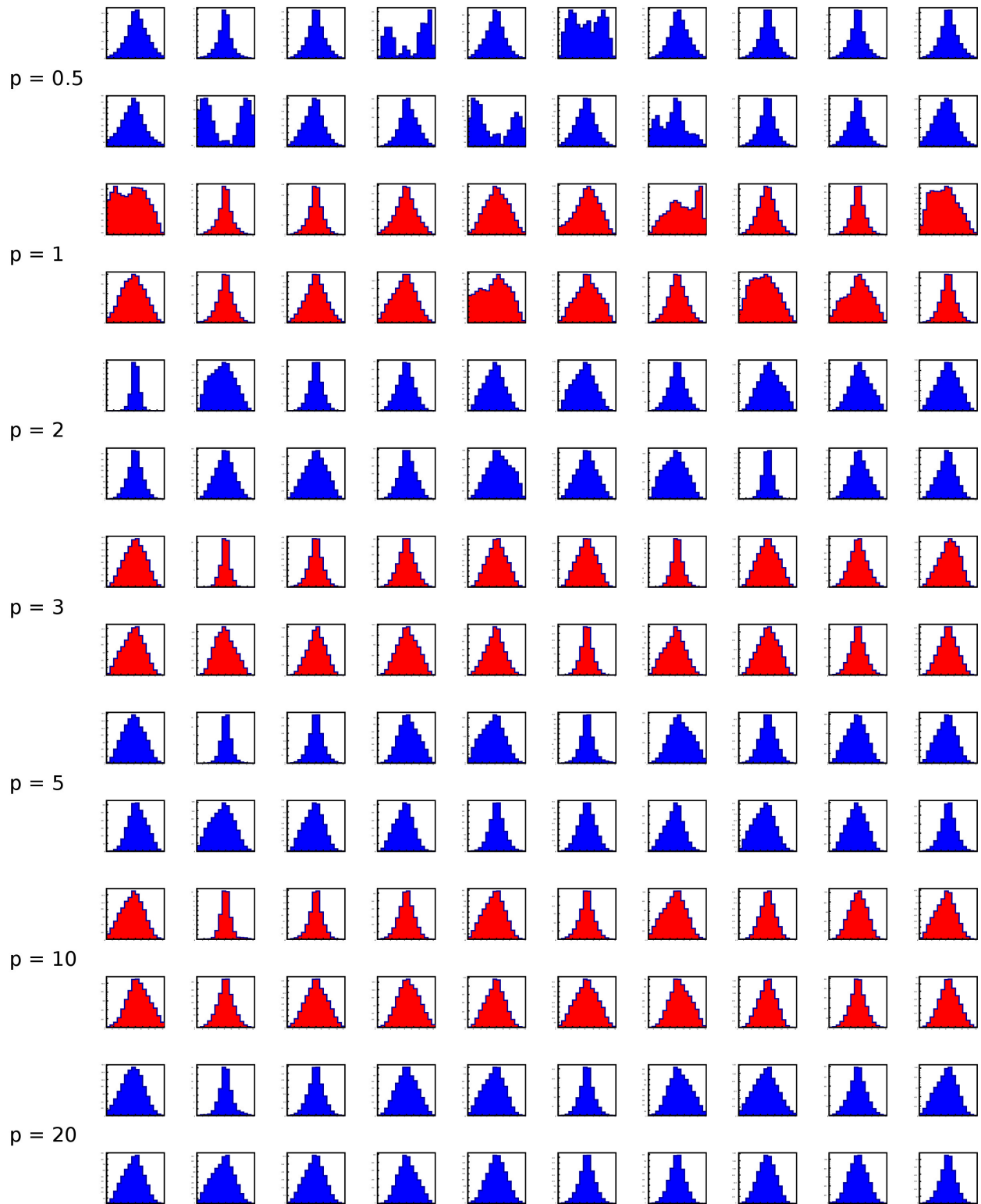


Figure S2: Comparison of local input space histograms of GNGs with 50 units, random 4-dimensional input, and increasing values for the Minkowski parameter p .

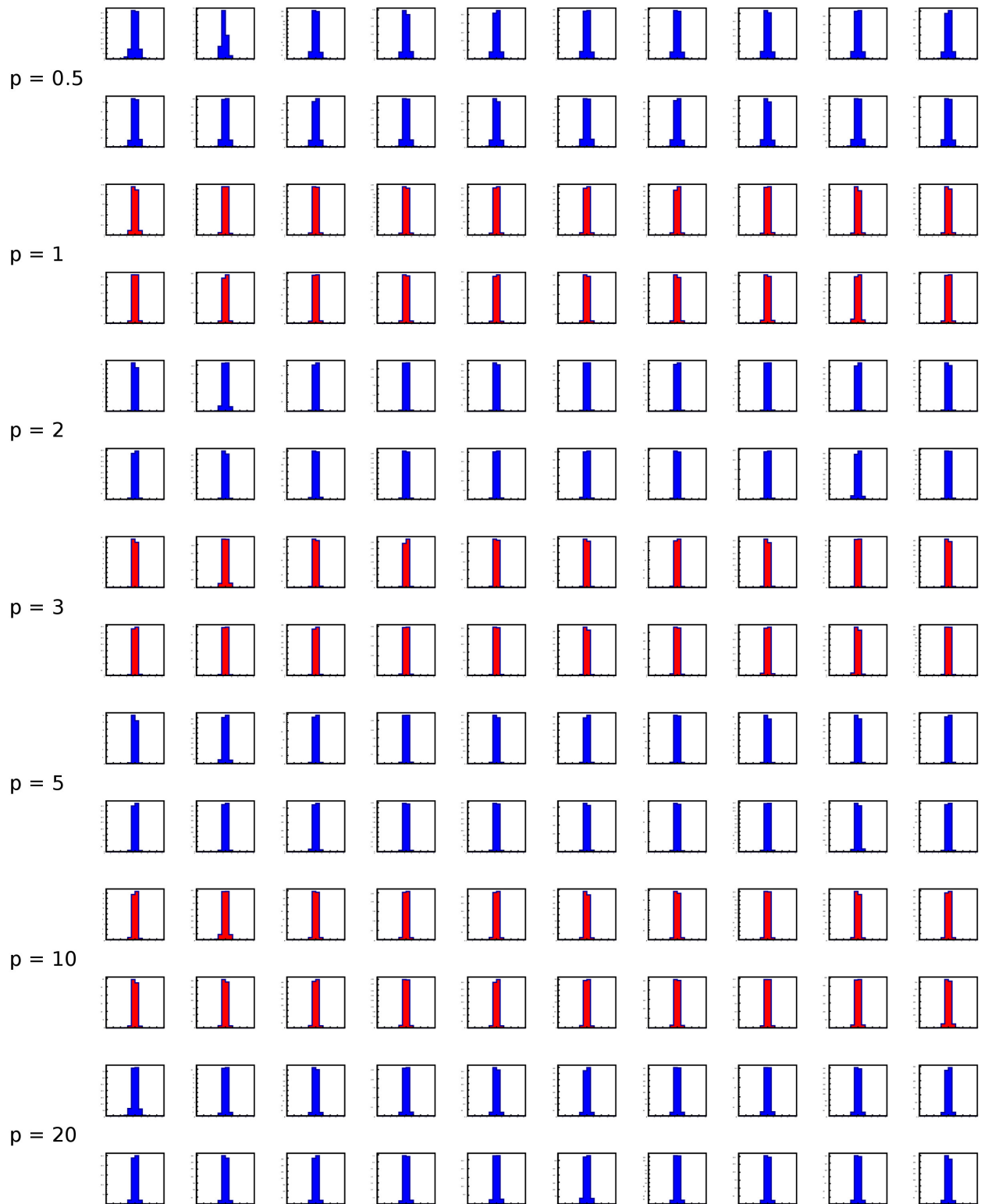


Figure S3: Comparison of local input space histograms of GNGs with 50 units, random 64-dimensional input, and increasing values for the Minkowski parameter p .

distribution of distances between units, $n = 64$

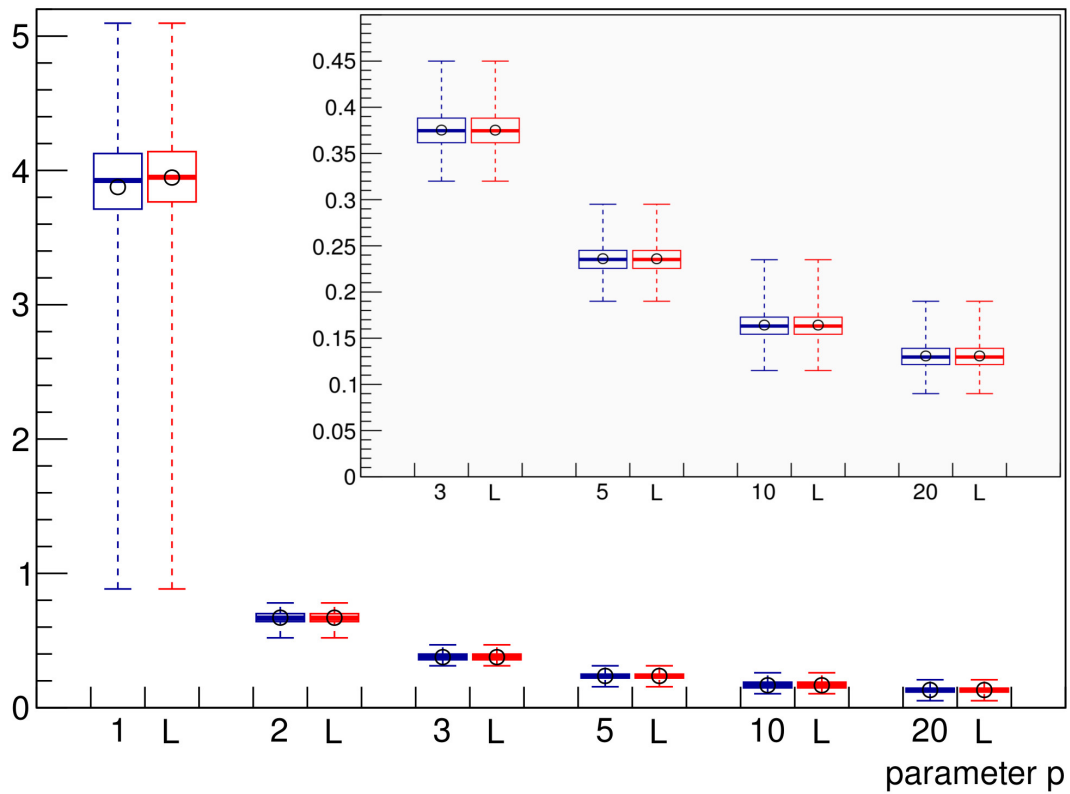


Figure S4: Box plot of the distributions of pairwise distances between the units of GNGs with fixed input space dimension $n = 64$ and varying Minkowski parameters p . Blue boxes describe the pairwise distances between all units, red boxes (L-columns) describe the pairwise distances between all units connected by edges. Circles represent the mean values of the distributions. Inset: Magnification of entries for $p = \{3, 5, 10, 20\}$.

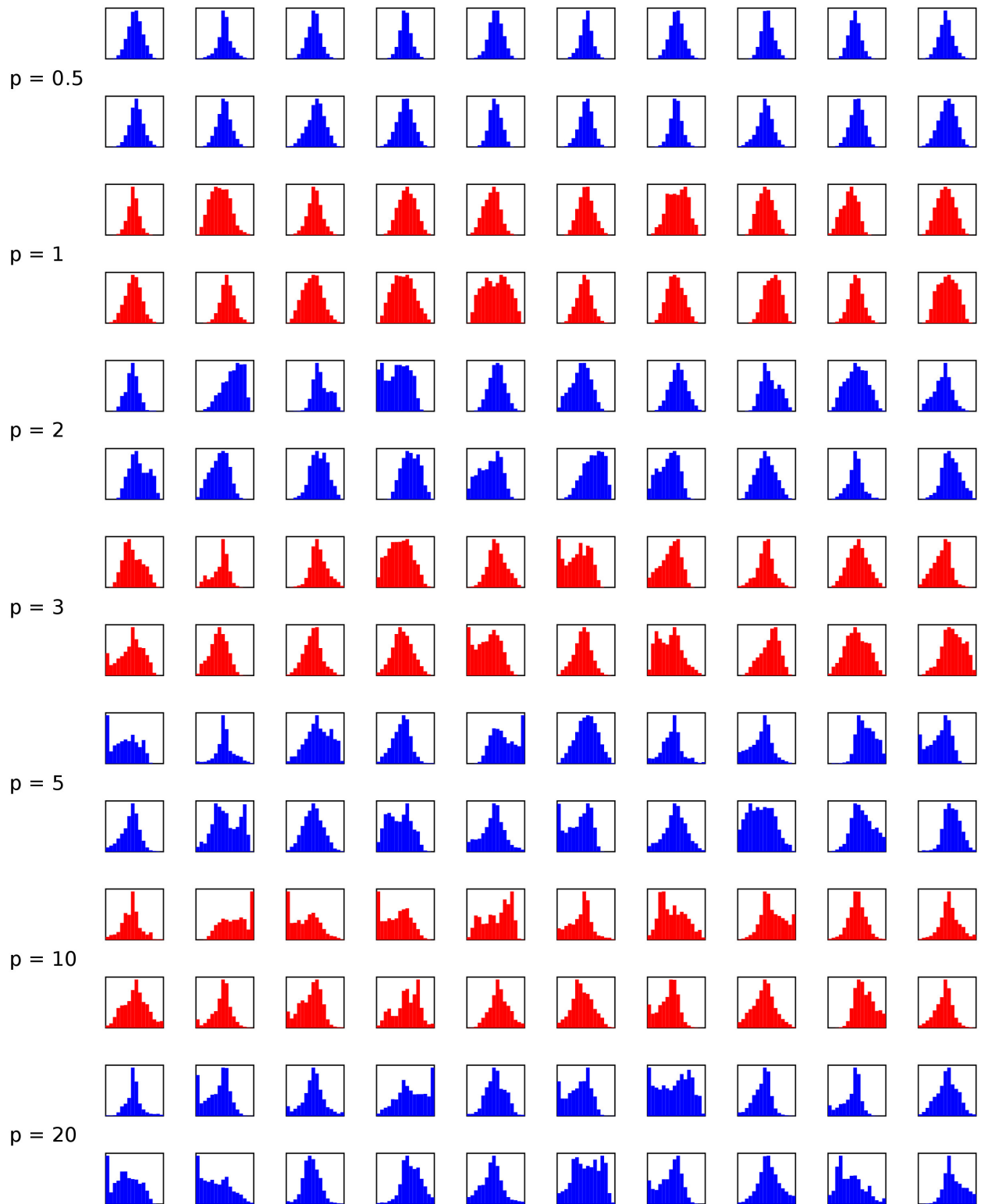


Figure S5: Comparison of local input space histograms of GNGs with 50 units, 64-dimensional color histogram input, and increasing values for the Minkowski parameter p .

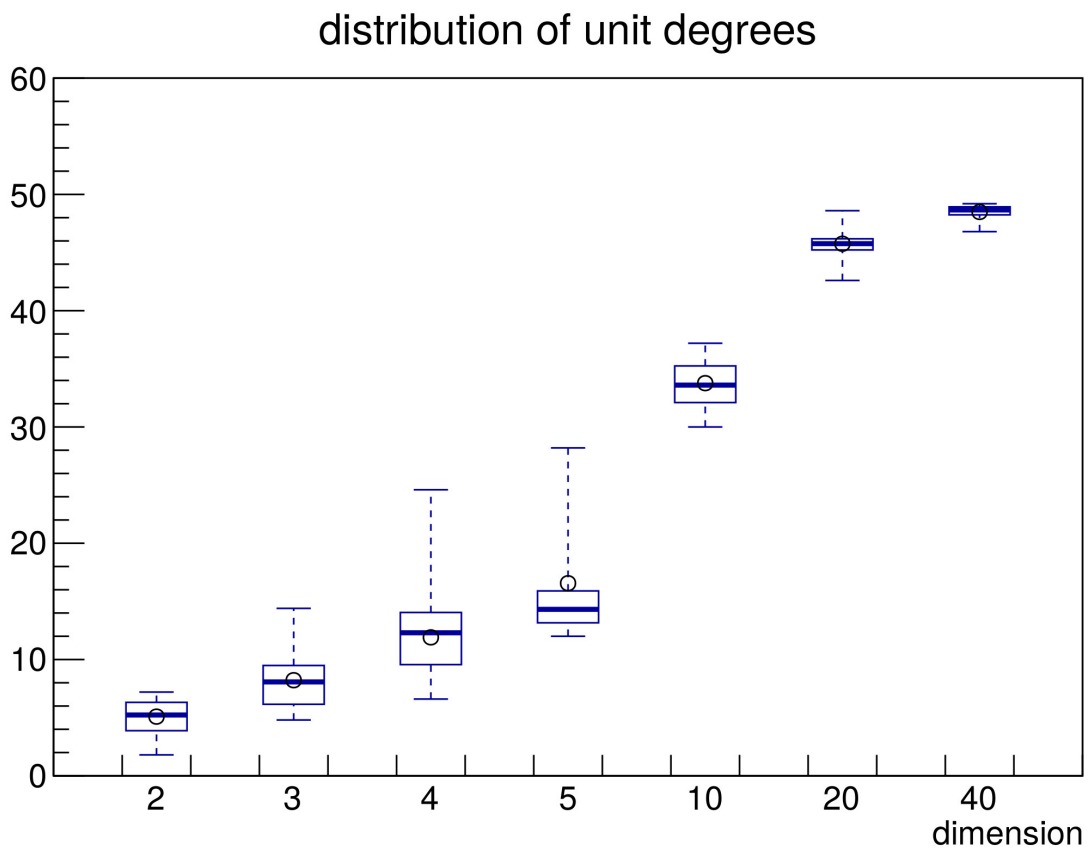


Figure S6: Box plot of the distributions of unit degrees of GNGs with 50 units, random input with increasing dimension, and fixed Minkowski parameter $p = 2$.

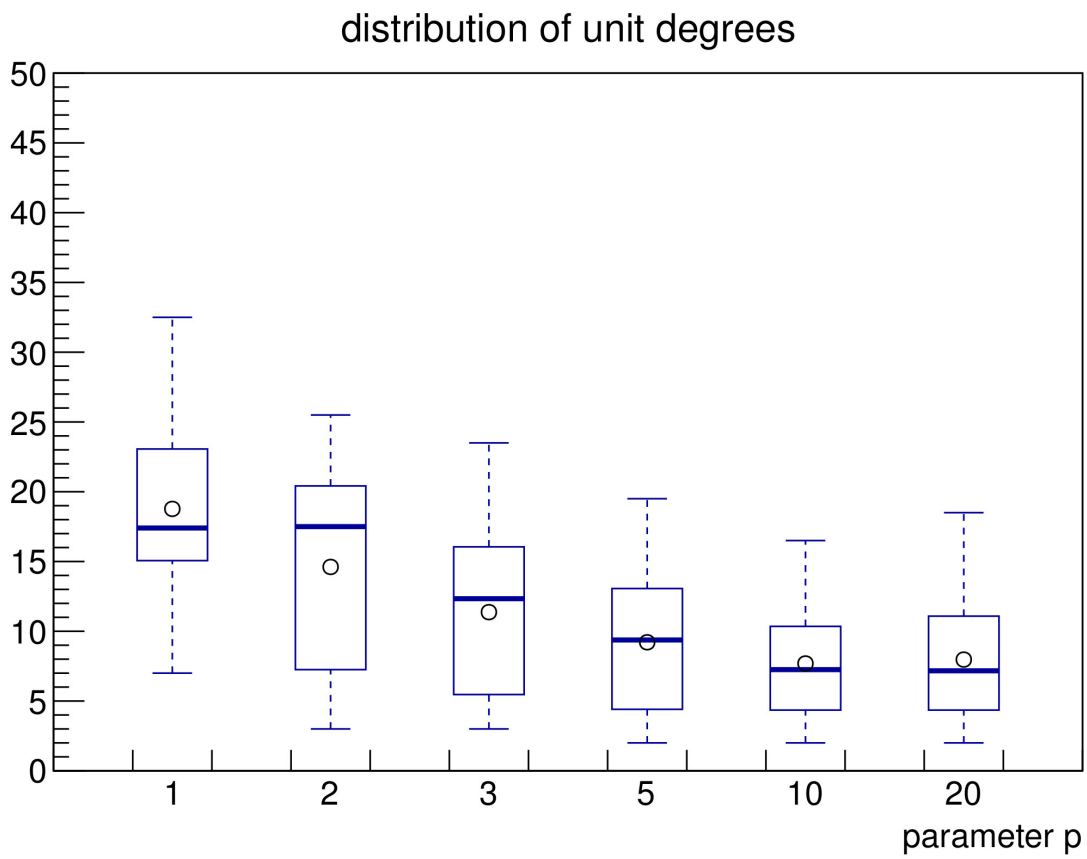


Figure S7: Box plot of the distributions of unit degrees of GNGs with 50 units, 64-dimensional color histogram input, and increasing values for the Minkowski parameter p .

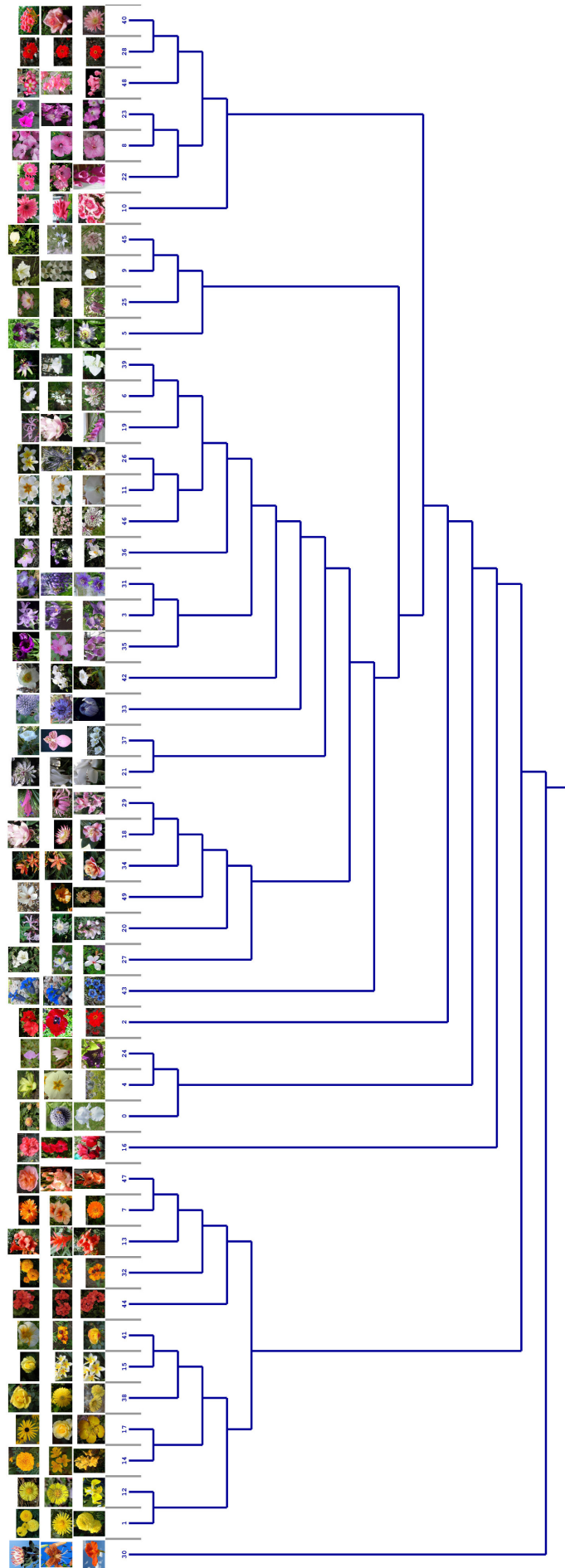


Figure S8: Mapping of closest input images to corresponding GNG units.